

\$1,100,000 - 00000 Navarre Pkwy, NAVARRE

MLS® #907177

\$1,100,000

Bedroom, Bathroom, 80,150 sqft
Residential Land on 1.84 Acres

CRESCENT SHORES, NAVARRE, FL

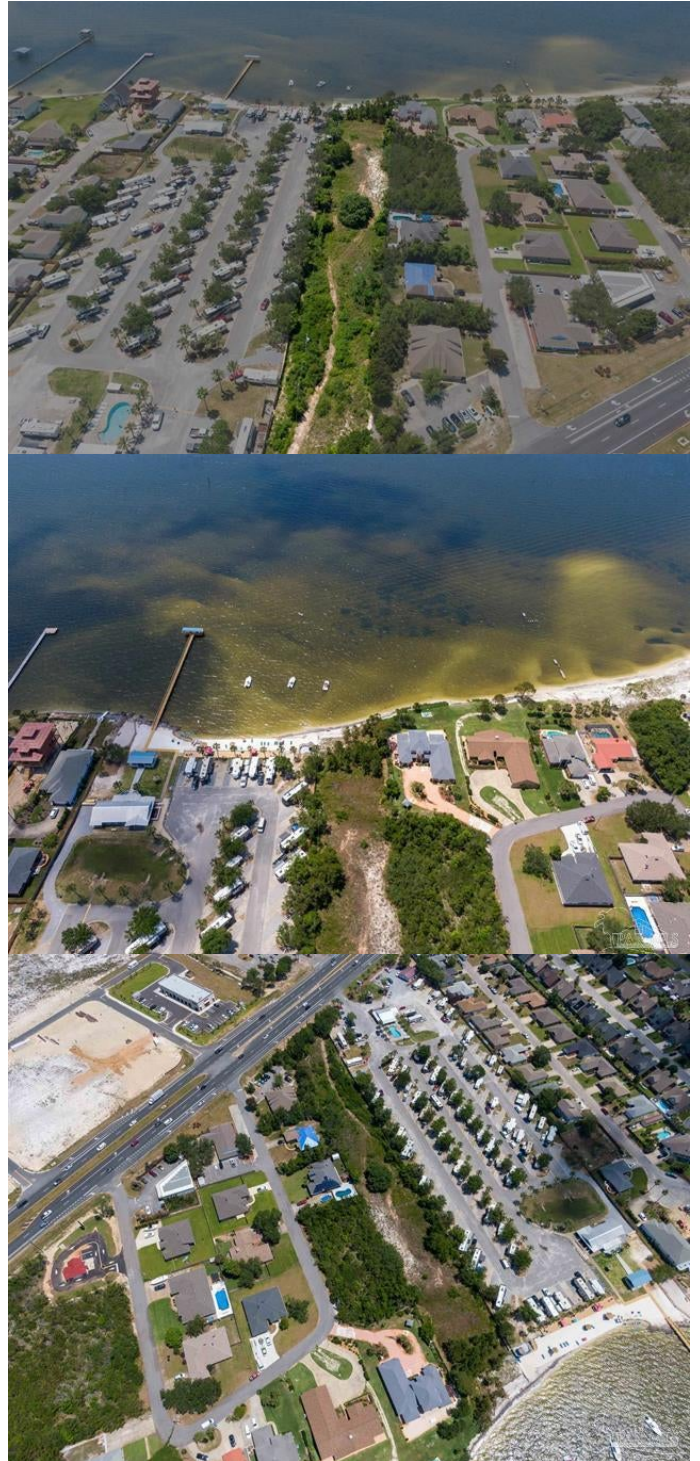
1.83 acres of Waterfront property in the rapidly growing community of Navarre. Located less than a mile East of the Navarre Beach Bridge, this property is perfect to build your dream home or to be developed for investment purposes. With 100' of frontage on the Santa Rosa sound, with its own beach, and direct access and frontage on Hwy 98, this property is a rare find! Property is across from the Hurlburt Specials Ops on the Gulf so there will not be any building there which means, you keep your view!

Essential Information

MLS® #	907177
Price	\$1,100,000
Square Footage	80,150
Acres	1.84
Type	Residential Land
Sub-Type	Residential Land
Status	Active

Community Information

Address	00000 Navarre Pkwy
Area	Navarre/Gulf Breeze
Subdivision	CRESCENT SHORES
City	NAVARRE
County	SANTA ROSA
State	FL
Zip Code	32566



Amenities

Utilities	Tap Fee Due
Features	Within 1/2 Mile Of Water, Build To Suit
Is Waterfront	Yes
Waterfront	Sound
Water View	Sound

Exterior

Lot Description	Within 1/2 Mile Of Water, Build To Suit
-----------------	---

School Information

Elementary	HOLLEY-NAVARRE
Middle	HOLLEY-NAVARRE
High	NAVARRE

Additional Information

Zoning	Commercial
HOA Fees	0.00

Listing Details

Listing Office	Hurd Real Estate & Company LLC
----------------	--------------------------------

DISCLAIMER: Information Deemed Reliable but not guaranteed. The information being provided is for consumers' personal, non-commercial use and may not be used for any purpose other than to identify prospective properties consumers may be interested in purchasing. All listings are provided courtesy of the Emerald Coast Association of Realtors, Copyright 2024, All rights reserved. Vendors Member Number : 28325
Listing information last updated on August 18th, 2024 at 3:00am CDT