

# \$135,000 - 12.95 Ac W Highway 90, BAKER

MLS® #952723

## \$135,000

Bedroom, Bathroom, 564,102 sqft  
Residential Land on 12.95 Acres

METES & BOUNDS, BAKER, FL

CREEKFRONT LIVING.. UNTOUCHED WOODLAND.. AND 12.95 ACRES OF UNTAPPED POTENTIAL! Owned by the same family since the LATE 1800's.. this triangular parcel is situated north of HWY 90. The parcel features some of the oldest oak trees in this area. Electric is available. Large untouched parcels that front HWY 90 are rare.. and they do not last long! Make an offer today.

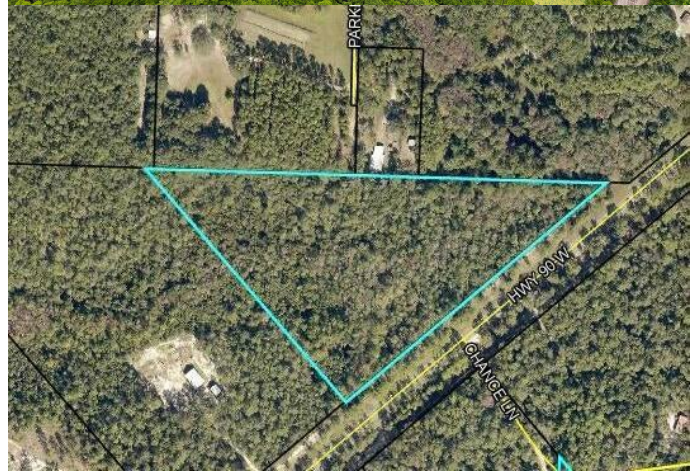
## Essential Information

MLS® #	952723
Price	\$135,000
Square Footage	564,102
Acres	12.95
Type	Residential Land
Sub-Type	Residential Land
Status	Active

## Community Information

Address	12.95 Ac W Highway 90
Area	Crestview Area
Subdivision	METES & BOUNDS
City	BAKER
County	OKALOOSA
State	FL
Zip Code	32531

## Amenities



Utilities	Electric Available
Features	Wooded, Interior
Is Waterfront	Yes
Waterfront	Creek, Stream
Water View	Creek

### **Exterior**

Lot Description	Wooded, Interior
-----------------	------------------

### **School Information**

Elementary	BAKER
Middle	BAKER
High	BAKER

### **Additional Information**

Zoning	Agriculture
HOA Fees	0.00

### **Listing Details**

Listing Office	ERA American Real Estate
----------------	--------------------------

DISCLAIMER: Information Deemed Reliable but not guaranteed. The information being provided is for consumers' personal, non-commercial use and may not be used for any purpose other than to identify prospective properties consumers may be interested in purchasing. All listings are provided courtesy of the Emerald Coast Association of Realtors, Copyright 2024, All rights reserved. Vendors Member Number : 28325  
Listing information last updated on August 14th, 2024 at 10:30am CDT