

\$900,000 - 145 Beachfront Trail 105, SANTA ROSA BEACH

MLS® #956153

\$900,000

2 Bedroom, 2.00 Bathroom, 1,008 sqft
Condominiums on 0.00 Acres

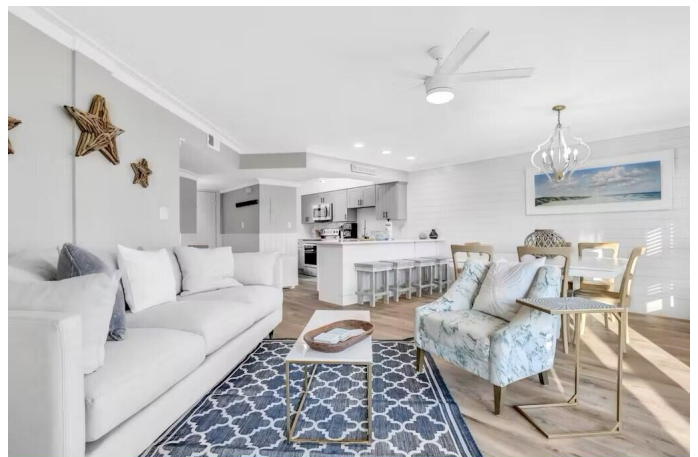
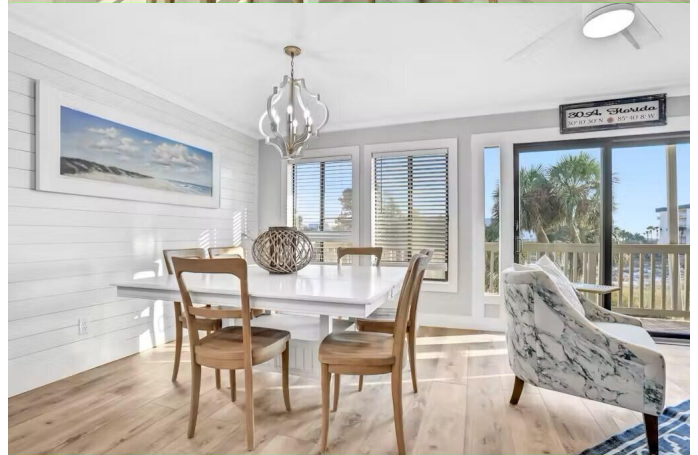
BEACHFRONT II CONDOS, SANTA ROSA BEACH, FL

Introducing 145 Beachfront Trl UNIT 105, a stunning 2-bedroom, 2-bathroom beachfront condo located just steps away from the pristine sands of 30A. This exquisite property has just been beautifully remodeled, offering the ultimate coastal living experience with direct beach access and breathtaking ocean views. The open-concept living space is designed for comfort and style, featuring modern finishes and plenty of natural light. In addition to its prime location and fresh updates, this condo boasts fantastic amenities, including a pool and a jacuzzi, perfect for unwinding after a day at the beach. Whether you're looking for a peaceful getaway or a permanent residence, this newly remodeled condo provides an unparalleled opportunity to enjoy the best of beachfront living.

Built in 1985

Essential Information

MLS® #	956153
Price	\$900,000
Bedrooms	2
Bathrooms	2.00
Full Baths	2
Square Footage	1,008
Acres	0.00
Year Built	1985
Type	Condominiums



Sub-Type	Condominiums
Style	N/A
Status	Active

Community Information

Address	145 Beachfront Trail 105
Area	30A East
Subdivision	BEACHFRONT II CONDOS
City	SANTA ROSA BEACH
County	WALTON
State	FL
Zip Code	32459

Amenities

Amenities	BBQ Pit/Grill, Beach, Pets Allowed, Picnic Area, Pool, Short Term Rental - Allowed, Whirlpool, Dumpster
Utilities	Electric Available, Public Sewer Available, Public Water Available, TV Cable Available
Parking	Other
Water View	Gulf/Pass
Has Pool	Yes
Pool	Pool - In-Ground, Community, Private

Interior

Interior Features	Ceiling Crwn Molding, Floor Laminate, Furnished - All, Kitchen Island, Lighting Recessed, Newly Painted, Owner's Closet, Pantry, Renovated, Shelving, Washer/Dryer Hookup
Appliances	Dishwasher, Disposal, Dryer, Microwave, Refrigerator, Stove/Oven Electric, Washer
Heating	Heat: Central Electric
Cooling	A/C: Central Electric, Ceiling Fans

Exterior

Exterior	Roof Shingle/Shake
Exterior Features	Balcony, Pool - In-Ground, Renovated, BBQ Pit/Grill
Roof	Roof Shingle/Shake

School Information

Elementary	Dune Lakes
Middle	Seaside

High

SOUTH WALTON

Additional Information

HOA Fees700.00

HOA Fees Freq. Monthly

Listing Details

Listing Office

EXP Realty LLC

DISCLAIMER: Information Deemed Reliable but not guaranteed. The information being provided is for consumers' personal, non-commercial use and may not be used for any purpose other than to identify prospective properties consumers may be interested in purchasing.All listings are provided courtesy of the Emerald Coast Association of Realtors, Copyright2024, All rights reserved.Vendors Member Number : 28325

Listing information last updated on August 3rd, 2024 at 3:15pm CDT