

\$470,000 - 23223 Front Beach Rd # 319, PANAMA CITY BEACH

MLS® #956787

\$470,000

2 Bedroom, 2.00 Bathroom, 983 sqft
Condominiums on 0.00 Acres

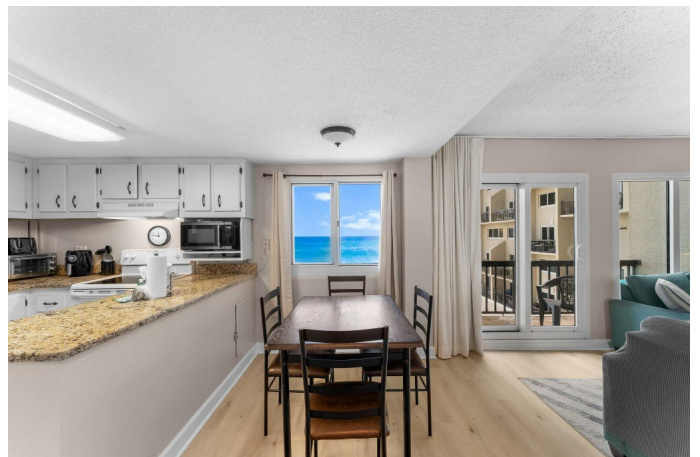
PINNACLE PORT, PANAMA CITY BEACH, FL

Pinnacle Port, nestled within the exclusive Carillon Beach community is a rare condominium complex that promises an enchanting coastal lifestyle. This, two-story abode offers breathtaking waterfront vistas of the Gulf of Mexico. As you step inside, the mesmerizing Gulf views seamlessly blend into the living, dining, and kitchen areas, creating an inviting and serene atmosphere. On the second floor, the guest bedroom, features its own private bathroom and stunning Gulf views, ensuring a cozy and welcoming retreat for visitors. The primary bedroom also on the second floor, awaits with an ensuite bathroom and a private balcony. Residents of Pinnacle Port enjoy a plethora of top-tier amenities, including two sparkling pools (one covered and heated), four tennis courts, shuffleboard courts, a fitness center, steam rooms, and a community dock perfect for fishing and boating. Additionally, the community boasts superb fishing opportunities with direct access to Lake Powell, the largest area coastal dune lake, making it an angler's paradise.

Built in 1970

Essential Information

MLS® #	956787
Price	\$470,000
Bedrooms	2
Bathrooms	2.00



Full Baths	1
Half Baths	1
Square Footage	983
Acres	0.00
Year Built	1970
Type	Condominiums
Sub-Type	Condominiums
Style	N/A
Status	Active

Community Information

Address	23223 Front Beach Rd # 319
Area	Bay County
Subdivision	PINNACLE PORT
City	PANAMA CITY BEACH
County	BAY
State	FL
Zip Code	32413

Amenities

Amenities	BBQ Pit/Grill, Beach, Boat Launch, Community Room, Dock, Dumpster, Elevators, Exercise Room, Gated Community, Pavillion/Gazebo, Picnic Area, Playground, Pool, Sauna/Steam Room, Tennis, Waterfront
Utilities	Phone Available, Other
Water View	GULF
Has Pool	Yes
Pool	Community

Interior

Interior Features	Kitchen Island, Window Treatment All
Appliances	Dishwasher, Dryer, Microwave, Refrigerator, Stove/Oven Electric
Heating	Heat: Central Electric
Cooling	A/C: Central Electric

Exterior

Exterior	Concrete
Exterior Features	Balcony, Deck Open

School Information

Elementary	WEST BAY
Middle	Surfside
High	ARNOLD

Additional Information

HOA Fees	3314.14
HOA Fees Freq.	Quarterly

Listing Details

Listing Office	aDoor Properties
----------------	------------------

DISCLAIMER: Information Deemed Reliable but not guaranteed. The information being provided is for consumers' personal, non-commercial use and may not be used for any purpose other than to identify prospective properties consumers may be interested in purchasing. All listings are provided courtesy of the Emerald Coast Association of Realtors, Copyright2024, All rights reserved. Vendors Member Number : 28325

Listing information last updated on August 12th, 2024 at 8:15pm CDT