

# \$589,000 - 23223 Front Beach Rd # 724, PANAMA CITY BEACH

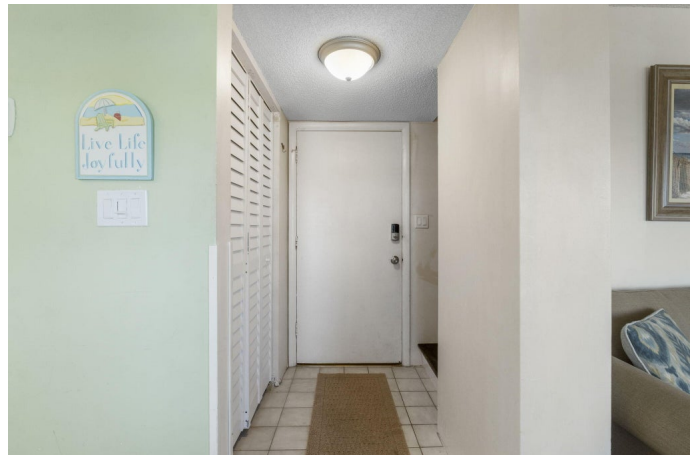
MLS® #939156

## \$589,000

2 Bedroom, 3.00 Bathroom, 983 sqft  
Condominiums on 0.00 Acres

### PINNACLE PORT, PANAMA CITY BEACH, FL

Welcome to your slice of paradise at Pinnacle Port! Nestled in the most coveted wing of this prestigious community, this 2-bedroom, 2.5 bathroom townhome-style condo boasts breathtaking panoramic views down the pristine beach, overlooking Camp Helen State Park, Inlet Beach, Rosemary Beach and 30A on the main floor and views down Panama City Beach and Pier park on top floor. Step inside this updated townhome style condo. Large windows frame the stunning vistas, offering daily doses of the mesmerizing beachfront right from the comfort of your condo. The master suite is a serene retreat, complete with its own private balcony access and an ensuite bath for utmost convenience and luxury. The second bedroom also offers comfort and privacy for guests or family members. This exclusive condo comes with a range of amenities, including, boat ramp, boat slips 2 pools, tennis/ pickleball courts, grilling area fitness center, private beach access, ensuring a lifestyle of relaxation and leisure. Pinnacle Port's desirable location provides a lakefront and beachfront property with easy access to Rosemary Beach, Alys beach and 30A's dining, and entertainment options, making it an ideal choice for both a vacation rental machine or a permanent residence. Don't miss this rare opportunity to own a piece of paradise in the most sought-after wing of Pinnacle Port. Embrace coastal living at its finest and make this stunning condo your own!



Built in 1970

## Essential Information

MLS® #	939156
Price	\$589,000
Bedrooms	2
Bathrooms	3.00
Full Baths	2
Half Baths	1
Square Footage	983
Acres	0.00
Year Built	1970
Type	Condominiums
Sub-Type	Condominiums
Style	N/A
Status	Active

## Community Information

Address	23223 Front Beach Rd # 724
Area	Bay County
Subdivision	PINNACLE PORT
City	PANAMA CITY BEACH
County	BAY
State	FL
Zip Code	32413

## Amenities

Amenities	BBQ Pit/Grill, Beach, Boat Launch, Community Room, Dock, Exercise Room, Fishing, Gated Community, Pets Allowed, Pickle Ball, Picnic Area, Pool, Short Term Rental - Allowed, Tennis, Waterfront
Utilities	Electric Available, Public Sewer Available, Public Water Available, TV Cable Available
Is Waterfront	Yes
Waterfront	GULF, Lake
Water View	GULF, Lake
Has Pool	Yes
Pool	Community

## Interior

Cooling                    A/C: Central Electric, Ceiling Fans

## **Exterior**

Exterior Features    Balcony

## **School Information**

Elementary            WEST BAY

Middle                Surfside

High                    ARNOLD

## **Additional Information**

HOA Fees              3314.14

HOA Fees Freq.    Quarterly

## **Listing Details**

Listing Office        Counts Real Estate Group Inc

DISCLAIMER: Information Deemed Reliable but not guaranteed. The information being provided is for consumers' personal, non-commercial use and may not be used for any purpose other than to identify prospective properties consumers may be interested in purchasing. All listings are provided courtesy of the Emerald Coast Association of Realtors, Copyright 2024, All rights reserved. Vendors Member Number : 28325

Listing information last updated on August 14th, 2024 at 11:00am CDT