

# \$699,000 - 23223 Front Beach Rd # A1-7, PANAMA CITY BEACH

MLS® #953416

## \$699,000

2 Bedroom, 3.00 Bathroom, 983 sqft  
Condominiums on 0.00 Acres

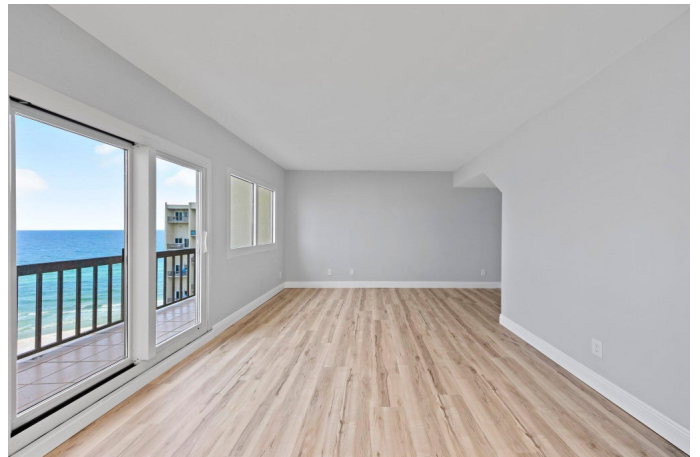
### PINNACLE PORT, PANAMA CITY BEACH, FL

Step into your dream escape at this newly renovated 2-story, 2-bedroom, 2.5-bathroom penthouse, perfectly positioned on the 12th and 13th floors to capture stunning Gulf views. Indulge in Carrara Marble bathrooms that redefine luxury, complete with sleek new stainless steel appliances and marble countertops in the kitchen. The master suite boasts its own private balcony, ideal for morning coffee with a view. With all-new flooring, fresh paint, and stylish cabinets, every corner radiates modern elegance. Located on Panama City Beach's west end, and just moments from the charm of 30A, this penthouse offers a lifestyle of coastal bliss and convenience.

Built in 1970

### Essential Information

MLS® #	953416
Price	\$699,000
Bedrooms	2
Bathrooms	3.00
Full Baths	2
Half Baths	1
Square Footage	983
Acres	0.00
Year Built	1970
Type	Condominiums
Sub-Type	Condominiums



Style N/A  
Status Active

### Community Information

Address 23223 Front Beach Rd # A1-7  
Area Bay County  
Subdivision PINNACLE PORT  
City PANAMA CITY BEACH  
County BAY  
State FL  
Zip Code 32413

### Amenities

Amenities Beach, Gated Community, Pets Allowed, BBQ Pit/Grill, Boat Launch, Community Room, Dock, Elevators, Exercise Room, Fishing, Pavillion/Gazebo, Picnic Area, Playground, Pool, Sauna/Steam Room, TV Cable Available, Tennis, Waterfront, Pickle Ball, Short Term Rental - Allowed  
Utilities Electric Available, Public Sewer Available, Public Water Available, TV Cable Available  
Is Waterfront Yes  
Waterfront GULF, Gulf/Pass, Lake, Shore: Beach, Sound, Unit Waterfront  
Water View GULF, Gulf/Pass, Lake, Sound, Unit Waterview Only  
Has Pool Yes  
Pool Pool - In-Ground, Community, Private

### Interior

Interior Features Elevator, Kitchen Island, Washer/Dryer Hookup, Floor Laminate, Newly Painted, Renovated  
Appliances Dishwasher, Disposal, Dryer, Refrigerator, Washer, Refrigerator W/Ice Maker, Stove/Oven Electric  
Heating Heat: Central Electric  
Cooling A/C: Central Electric

### Exterior

Exterior Siding Stucco  
Exterior Features Balcony, Pool - In-Ground, Boat Launch, Dock, Pavillion/Gazebo, Renovated, Sauna/Steam, Shower, Tennis Court

### School Information

Elementary	WEST BAY
Middle	Surfside
High	ARNOLD

### **Additional Information**

HOA Fees	3314.14
HOA Fees Freq.	Quarterly

### **Listing Details**

Listing Office	Coldwell Banker Realty
----------------	------------------------

DISCLAIMER: Information Deemed Reliable but not guaranteed. The information being provided is for consumers' personal, non-commercial use and may not be used for any purpose other than to identify prospective properties consumers may be interested in purchasing. All listings are provided courtesy of the Emerald Coast Association of Realtors, Copyright2024, All rights reserved. Vendors Member Number : 28325

Listing information last updated on July 3rd, 2024 at 2:30pm CDT