

# \$1,199,000 - 27 Sky High Dune Dr, SANTA ROSA BEACH

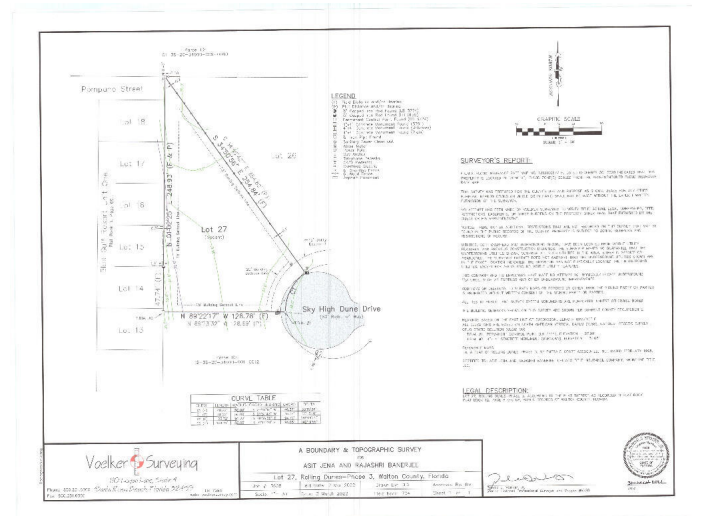
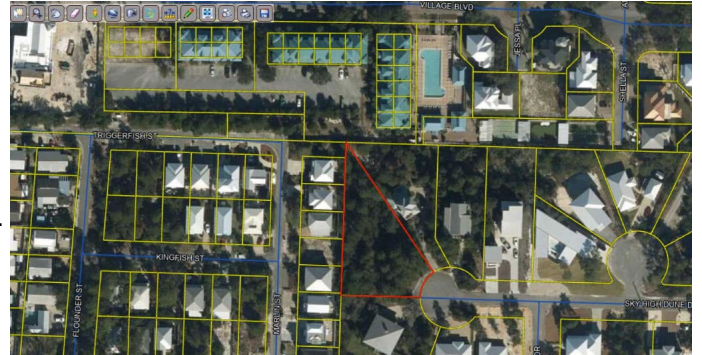
MLS® #951080

**\$1,199,000**

Bedroom, Bathroom, 20,909 sqft  
Residential Land on 0.48 Acres

ROLLING DUNES PH 3, SANTA ROSA BEACH, FL

Don't miss this rare opportunity to own a half acre, elevated, buildable lot with NO HOA or build out time. Located in the heart of Blue Mountain Beach, in the quiet community of Rolling Dunes. This lot is large enough to accommodate a large home, carriage house and a pool. Blue Mountain Beach public beach access is within a very close proximity. Possible 360 degree gulf and lake view from 3rd and 4th floor. Lot at one of the highest elevations on 30-A. Call today for details!



## Essential Information

MLS® #	951080
Price	\$1,199,000
Square Footage	20,909
Acres	0.48
Type	Residential Land
Sub-Type	Residential Land
Status	Active

## Community Information

Address	27 Sky High Dune Dr
Area	30A West
Subdivision	ROLLING DUNES PH 3
City	SANTA ROSA BEACH
County	WALTON
State	FL
Zip Code	32459

## Amenities

Utilities Electric Available, Public Sewer Available, Public Water Available  
Features Corner, Cul-De-Sac

## Exterior

Lot Description Corner, Cul-De-Sac

## School Information

Elementary VAN R. BUTLER  
Middle Seaside  
High SOUTH WALTON

## Additional Information

Zoning Residential Single Family  
HOA Fees 0.00

## Listing Details

Listing Office ListWithFreedom.com

DISCLAIMER: Information Deemed Reliable but not guaranteed. The information being provided is for consumers' personal, non-commercial use and may not be used for any purpose other than to identify prospective properties consumers may be interested in purchasing. All listings are provided courtesy of the Emerald Coast Association of Realtors, Copyright 2024, All rights reserved. Vendors Member Number : 28325  
Listing information last updated on August 14th, 2024 at 10:45am CDT