

# \$353,900 - 3066 Jane Ln, CRESTVIEW

MLS® #957345

## \$353,900

4 Bedroom, 2.00 Bathroom, 1,787 sqft  
Detached Single Family on 0.21 Acres

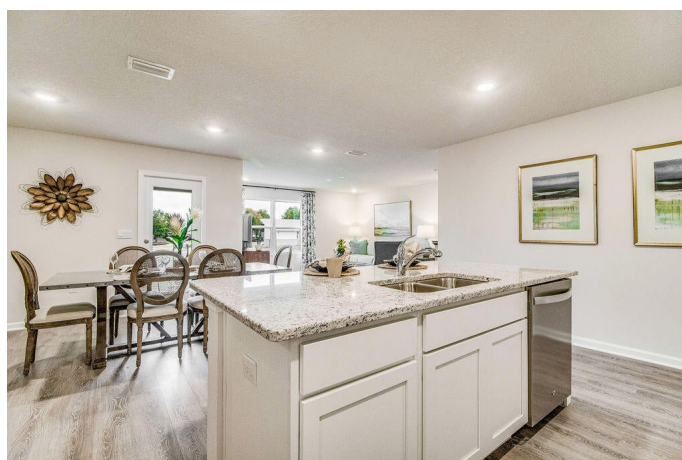
Royal Estates, CRESTVIEW, FL

Welcome to Royal Estates! This highly desirable Cali model, one of our most popular floorplans with a fabulous open design for relaxed living. 4 beds, 2 baths, covered patio, 2 car garage & the 'Smart Home Connect' System has a variety of convenient Smart Hm. Devices. Well-designed kitchen features stainless appliances, gorgeous granite, smooth-top range, built in microwave, quiet dishwasher, corner pantry, island bar, striking wood-look flooring throughout & PLUSH carpet in the bedrooms. Bedroom 1 & adjoining bath has a lg. walk-in closet, + extra storage double granite vanity sinks & lg. shower. Sharp curb appeal with nice clean lines. Easy access to the airport, military base, beaches at Ft. Walton, Destin & minutes from the popular Blackstone Golf Course.

Built in 2024

## Essential Information

MLS® #	957345
Price	\$353,900
Bedrooms	4
Bathrooms	2.00
Full Baths	2
Square Footage	1,787
Acres	0.21
Year Built	2024
Type	Detached Single Family



Sub-Type	Detached Single Family
Style	Craftsman Style
Status	Active

### **Community Information**

Address	3066 Jane Ln
Area	Crestview Area
Subdivision	Royal Estates
City	CRESTVIEW
County	OKALOOSA
State	FL
Zip Code	32539

### **Amenities**

Utilities	Public Sewer Available, Public Water Available, Underground
Parking Spaces	2
Parking	Garage: Attached
# of Garages	2

### **Interior**

Interior Features	Floor Vinyl, Floor WW Carpet New, Kitchen Island, Lighting Recessed, Pantry, Split Bedroom, Washer/Dryer Hookup
Appliances	Auto Garage Door Opn, Dishwasher, Disposal, Microwave, Smoke Detector, Smooth Stovetop Rnge, Stove/Oven Electric, Warranty Provided
Heating	Heat: Central Electric
Cooling	A/C: Central Electric
# of Stories	1

### **Exterior**

Exterior	Frame, Roof Dimensional Shingle, Siding CmntFbrHrdBrd, Foundation Slab On Grade
Exterior Features	Patio Covered
Lot Description	Sidewalk
Windows	Double Paned Windows
Roof	Roof Dimensional Shingle
Construction	Frame
Foundation	Foundation Slab On Grade

### **School Information**

Elementary	RIVERSIDE
Middle	SHOAL RIVER
High	CRESTVIEW

### **Additional Information**

Zoning	Residential Single Family
HOA Fees	550.00
HOA Fees Freq.	Annually

### **Listing Details**

Listing Office	DR Horton Realty of Northwest Florida LLC
----------------	---

DISCLAIMER: Information Deemed Reliable but not guaranteed. The information being provided is for consumers' personal, non-commercial use and may not be used for any purpose other than to identify prospective properties consumers may be interested in purchasing. All listings are provided courtesy of the Emerald Coast Association of Realtors, Copyright2024, All rights reserved. Vendors Member Number : 28325

Listing information last updated on August 20th, 2024 at 4:15pm CDT