

\$390,000 - 402 Sandy Ridge Cir, MARY ESTHER

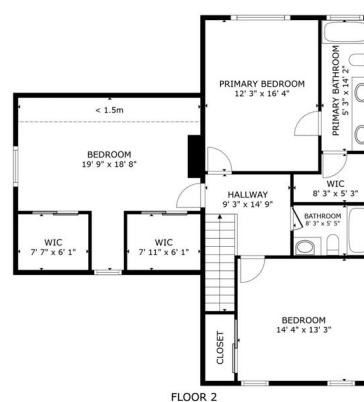
MLS® #953505

\$390,000

3 Bedroom, 3.00 Bathroom, 1,510 sqft
Detached Single Family on 0.11 Acres

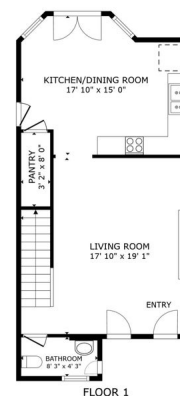
SANDY RIDGE ESTATES, MARY ESTHER, FL

This in-ground pool home boasts a 2021 roof and a 2018 HVAC system with a smart panel for efficient year-round climate control. Enjoy pure and soft water with the included water softener and reverse osmosis system. Hurricane windows and doors provide protection and energy efficiency. The home is wired for a whole-house generator, ensuring you're never without power, and features a dedicated power source for your RV, ideal for travel enthusiasts. Outdoor living is a delight with an in-ground pool surrounded by a wrap-around Trex pool deck. A safety pool fence ensures peace of mind. Inside, cozy up to the wood-burning fireplace on chilly evenings. The custom kitchen cabinets, granite countertops, and stainless steel appliances make the kitchen a chef's dream. Recessed lighting throughout the home illuminates the space beautifully. The master bathroom features a double vanity, providing ample space for morning routines. Located in a desirable subdivision just minutes from The Sound, this home offers the perfect blend of tranquility and convenience. Plus, it's close to Hurlburt, making it ideal for military families or those working on the base. Don't miss the opportunity to make this exceptional property your new home!



GROSS INTERNAL AREA
FLOOR 1 628 sq.ft., FLOOR 2 1,020 sq.ft.
EXCLUDED AREAS: RECESSED HALLWAY 31 sq.ft.
TOTAL: 1,648 sq.ft.
SCALE AND DIMENSIONS ARE APPROXIMATE. ACTUAL SIZE VARY.

Matterport



GROSS INTERNAL AREA
FLOOR 1 628 sq.ft., FLOOR 2 1,020 sq.ft.
EXCLUDED AREAS: RECESSED HALLWAY 31 sq.ft.
TOTAL: 1,648 sq.ft.
SCALE AND DIMENSIONS ARE APPROXIMATE. ACTUAL SIZE VARY.

Matterport

Built in 1992

Essential Information

MLS® #	953505
Price	\$390,000
Bedrooms	3
Bathrooms	3.00
Full Baths	2
Half Baths	1
Square Footage	1,510
Acres	0.11
Year Built	1992
Type	Detached Single Family
Sub-Type	Detached Single Family
Style	Colonial
Status	Active

Community Information

Address	402 Sandy Ridge Cir
Area	Fort Walton Beach
Subdivision	SANDY RIDGE ESTATES
City	MARY ESTHER
County	OKALOOSA
State	FL
Zip Code	32569

Amenities

Utilities	Electric Available, Public Sewer Available, Public Water Available, TV Cable Available
Parking Spaces	2
Parking	Garage: Attached, RV
# of Garages	2
Has Pool	Yes
Pool	Private, Pool - Gunite Concrct, Pool - In-Ground, Community

Interior

Interior Features	Ceiling Raised, Fireplace, Floor Tile, Lighting Recessed, Washer/Dryer Hookup
Appliances	Dishwasher, Disposal, Refrigerator W/Ice Maker, Smooth Stovetop Rnge, Stove/Oven Electric
Heating	Heat: Central Electric
Cooling	A/C: Central Electric

Fireplace	Yes
Fireplaces	Fireplace
# of Stories	2

Exterior

Exterior	Roof Composite Shingle, Siding Vinyl
Exterior Features	Deck Open, Fenced Back Yard, Lawn Pump, Pool - Gunite Concrct, Pool - In-Ground
Lot Description	Interior, Level, Within 1/2 Mile Of Water
Windows	Double Paned Windows
Roof	Roof Composite Shingle
Foundation	Siding Vinyl

School Information

Elementary	FLOROSA
Middle	BRUNER
High	FORT WALTON BEACH

Additional Information

Zoning	Residential Single Family
HOA Fees	0.00

Listing Details

Listing Office	Keller Williams Realty Destin
----------------	-------------------------------

DISCLAIMER: Information Deemed Reliable but not guaranteed. The information being provided is for consumers' personal, non-commercial use and may not be used for any purpose other than to identify prospective properties consumers may be interested in purchasing. All listings are provided courtesy of the Emerald Coast Association of Realtors, Copyright2024, All rights reserved. Vendors Member Number : 28325
Listing information last updated on July 6th, 2024 at 4:00am CDT