

# \$1,135,000 - 41 Pollard Cove West Lot 50, WATERSOUND

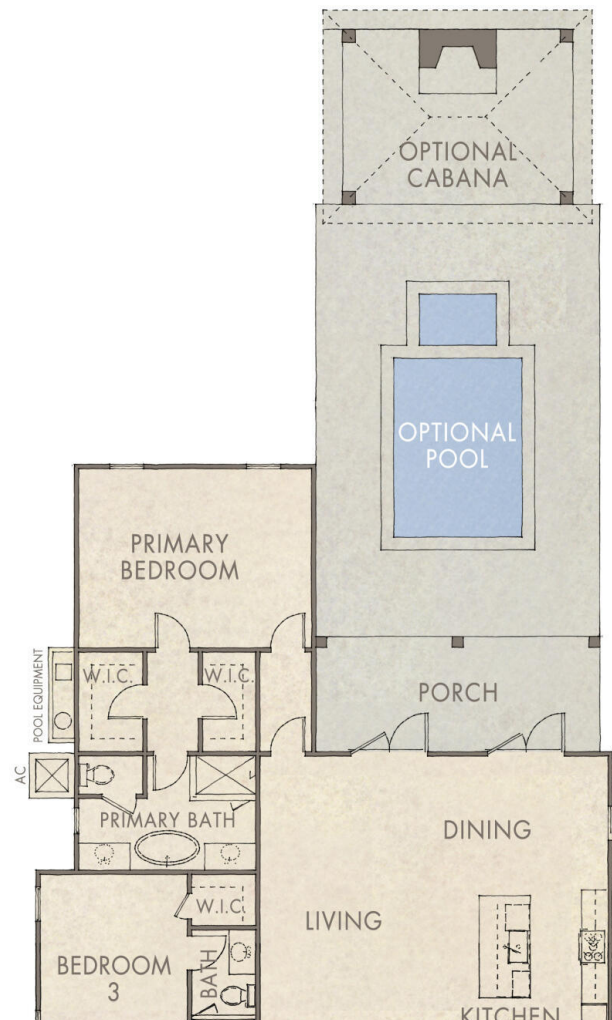
MLS® #942012

## \$1,135,000

4 Bedroom, 3.00 Bathroom, 2,081 sqft  
Detached Single Family on 0.00 Acres

### WATERSOUND ORIGINS, WATERSOUND, FL

The Waitsfield plan by Romair Homes is a 1-story layout with 4 bedrooms, 3 bathrooms, a 2-car garage and 2 covered porches. This spec home is located in the newly released Powell Landing East phase and is expected to be complete August 24'. This strategically designed, single-level plan presents an open-concept layout with the option of making the fourth bedroom an at-home office. Upon entering, you'll be greeted with abundant luxury features including 10' ceilings, 8' solid core shaker style doors, custom designed cabinets with contemporary overlay and soft close drawers and doors, 6" plank engineered white oak wood flooring throughout, GE Monogram Integrated appliance package (including cabinet panel 36" French door refrigerator with bottom freezer, a 36" dual-fuel Professional range with 6 burners, microwave drawer and cabinet panel Asko dishwasher), Quartz kitchen countertops, under cabinet lighting, designer curated Porcelain tile in all bathrooms, frameless glass shower doors and designer light fixtures, plus more! This plan also features a highly functional Utility/ Laundry room with a drop zone, built-in bench with cubbies and dressed with Carrara Marble countertop and under cabinet lighting. You won't want to miss the gorgeous outdoor oasis just off the living room through the double french doors. Indulge in relaxing outdoor living with your outdoor cabana and fireplace. Also, its notable that a pool/spa upgrade can be added if chosen



before construction cut-off stage. Please contact a Watersound Origins community specialist for more details.

The Watersound Origins community is one of South Walton's most coveted neighborhoods for its exceptional amenities, beautiful new homes, and prime location. Amenities include the Village Commons pool & fitness center, sports courts, miles of nature trails, dock access to Lake Powell, unlimited golf, and lots of green space for outdoor play. The all new Watersound Town Center brings a new level of excitement and convenience to the community with a Publix Super Market, Delicious restaurants, healthcare facilities, a weekly Farmers Market, and more right at the entrance to the neighborhood!

\*Pricing for inventory homes include lot premiums and may include optional upgrades. Added options/upgrades and pricing are subject to change. Please check with the on-site community specialists for the latest information for this home.

Built in 2024

### **Essential Information**

MLS® #	942012
Price	\$1,135,000
Bedrooms	4
Bathrooms	3.00
Full Baths	3
Square Footage	2,081
Acres	0.00
Year Built	2024
Type	Detached Single Family
Sub-Type	Detached Single Family
Style	Florida Cottage

Status Active

### Community Information

Address 41 Pollard Cove West Lot 50  
Area 30A East  
Subdivision WATERSOUND ORIGINS  
City WATERSOUND  
County WALTON  
State FL  
Zip Code 32461

### Amenities

Amenities Dock, Exercise Room, Fishing, Golf, Pets Allowed, Pickle Ball, Picnic Area, Playground, Pool, No Short Term Rental, Tennis, Waterfront  
Utilities Electric Available, Gas - Natural, Phone Available, Public Sewer Available, Public Water Available, Tap Fee Paid, TV Cable Available  
Parking Spaces 2  
Parking Garage: Attached  
# of Garages 2  
Has Pool Yes  
Pool Community

### Interior

Interior Features Ceiling Crwn Molding, Ceiling Raised, Floor Hardwood, Floor Tile, Kitchen Island, Shelving, Washer/Dryer Hookup  
Appliances Auto Garage Door Opn, Dishwasher, Disposal, Microwave, Range Hood, Refrigerator W/Ice Maker, Stove/Oven Gas  
Heating Heat: Central Electric  
Cooling A/C: Central Electric, A/C: High Efficiency, Ceiling Fans  
# of Stories 1

### Exterior

Exterior Roof Shingle/Shake, Siding CmntFbrHrdBrd  
Exterior Features Cabana, Fireplace, Porch Covered, Sprinkler System  
Lot Description Interior  
Roof Roof Shingle/Shake

### School Information

Elementary Dune Lakes  
Middle EMERALD COAST

High SOUTH WALTON

### **Additional Information**

Zoning Residential Single Family

HOA Fees 585.00

HOA Fees Freq. Quarterly

### **Listing Details**

Listing Office Berkshire Hathaway HomeServices

DISCLAIMER: Information Deemed Reliable but not guaranteed. The information being provided is for consumers' personal, non-commercial use and may not be used for any purpose other than to identify prospective properties consumers may be interested in purchasing. All listings are provided courtesy of the Emerald Coast Association of Realtors, Copyright2024, All rights reserved. Vendors Member Number : 28325

Listing information last updated on July 15th, 2024 at 11:30pm CDT