

# \$323,900 - 5305 Parkside Dr, Pace

MLS® #953540

## \$323,900

3 Bedroom, 2.00 Bathroom, 1,723 sqft  
Detached Single Family on 0.13 Acres

Parkwood Commons, Pace, FL

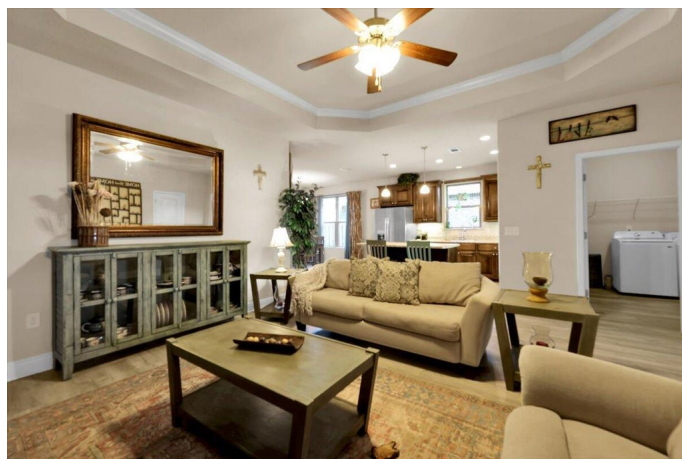
Open House Sunday 1-3pm (6/30)

Meticulously kept BRICK home with an open spacious living area, backyard retreat and huge laundry! Discover a stunning kitchen w/ an island and open floor plan that overlooks the living room. Custom raised maple cabinets, wide colonial baseboards, Spanish lace walls/ceilings, and pendant lighting create a fresh and inviting home. The dining room, overlooks the backyard oasis, providing a perfect setting for meals with family and friends. Step outside to the covered patio, where you can entertain guests or relax in the hammock and take in the peaceful surroundings. ALL FURNISHINGS NEGOTIABLE! Equipped with solar panels, enjoy lower power bills and lock in an energy production level that heavily competes with unpredictable rising utility costs. CALL TODAY!!

Built in 2018

## Essential Information

MLS® #	953540
Price	\$323,900
Bedrooms	3
Bathrooms	2.00
Full Baths	2
Square Footage	1,723
Acres	0.13
Year Built	2018



Type	Detached Single Family
Sub-Type	Detached Single Family
Style	Traditional
Status	Active

### **Community Information**

Address	5305 Parkside Dr
Area	North Santa Rosa County
Subdivision	Parkwood Commons
City	Pace
County	SANTA ROSA
State	FL
Zip Code	32571

### **Amenities**

Utilities	Electric Available, Public Sewer Available, Public Water Available
Parking Spaces	2
Parking	Garage, Garage: Attached
# of Garages	2

### **Interior**

Interior Features	Breakfast Bar, Floor Vinyl, Kitchen Island, Newly Painted, Pantry, Split Bedroom, Washer/Dryer Hookup, Window Treatment All
Appliances	Dishwasher, Dryer, Microwave, Refrigerator, Refrigerator W/Ice Maker, Smoke Detector, Stove/Oven Electric
Heating	Heat: Central Electric
Cooling	A/C: Central Electric, Ceiling Fans
# of Stories	1

### **Exterior**

Exterior	Siding Brick All, Roof Composite Shingle, Foundation Slab On Grade
Exterior Features	Fenced Back Yard, Fenced Privacy, Patio Covered
Lot Description	Interior
Windows	Double Paned Windows
Roof	Roof Composite Shingle
Foundation	Foundation Slab On Grade

### **School Information**

Elementary	S S Dixon
------------	-----------

Middle	Sims
High	Pace

### **Additional Information**

Zoning	Residential Single Family
HOA Fees	0.00

### **Listing Details**

Listing Office	EXP Realty LLC
----------------	----------------

DISCLAIMER: Information Deemed Reliable but not guaranteed. The information being provided is for consumers' personal, non-commercial use and may not be used for any purpose other than to identify prospective properties consumers may be interested in purchasing. All listings are provided courtesy of the Emerald Coast Association of Realtors, Copyright 2024, All rights reserved. Vendors Member Number : 28325

Listing information last updated on July 4th, 2024 at 6:30am CDT