

# \$3,995,000 - 57 White Cliffs Crest, SANTA ROSA BEACH

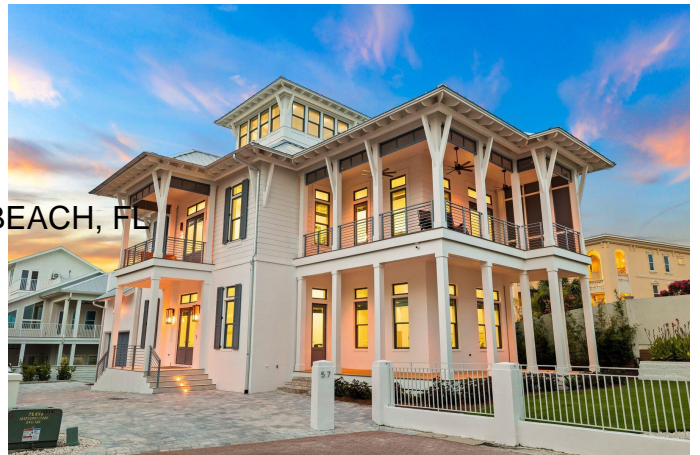
MLS® #953271

## \$3,995,000

4 Bedroom, 6.00 Bathroom, 3,366 sqft  
Detached Single Family on 0.17 Acres

VILLAGE OF WHITE CLIFFS THE, SANTA ROSA BEACH, FL

Welcome to this meticulously crafted coastal-contemporary retreat nestled in The Village of White Cliffs along Scenic Highway 30A. Designed by renowned architect Chris Stoyles of Archiscapes and built by Grand Bay Construction in 2023, this luxurious four-bedroom home is situated just steps away from the Gulf of Mexico, boasting an array of modern amenities and breathtaking second-row views. Upon entering, you are greeted by spacious interiors featuring 12-foot ceilings, engineered hardwood floors with a custom finish, and Sierra Pacific FeelSafe Double Hung Windows that are tinted for privacy and safe for local wildlife. The expansive guest bedrooms, each complete with en-suite bathrooms and walk-in closets, offer unparalleled comfort and privacy. The first level offers an oversized one-car garage with custom storage solutions, a spacious laundry room and a private elevator. Located on the second-level, the primary suite offers comfort and privacy with a spacious en-suite bathroom with dual vanities, a soaking tub and large walk-in shower. The heart of the home is the chef's kitchen, equipped with KitchenAid commercial appliances, a wine fridge, drawer microwave and quartz countertops throughout. A custom wall pantry with soft-close shelves complements the sleek design, ideal for culinary enthusiasts. The expansive kitchen seamlessly flows into the dining and living areas opening up to the wraparound deck with impressive views of the gulf. Additionally, a



third-level offers a flex space for use as an office, crafting space, or exercise room along with unfinished storage areas. For relaxation and entertainment, the home features a conditioned cupola providing 180-degree views of the Gulf, a perfect setting for enjoying sunsets. Outdoor living is enhanced by wrap-around Cumaru wood decks with ceiling fans and custom horizontal railings, creating inviting spaces to enjoy the coastal climate. A large artificial turf front yard and a seven-person hot tub complete the outdoor experience. Residents of The Village of White Cliffs enjoy a rental-restricted environment with a gated entry and access to exclusive amenities including a private beach, clubhouse with a full kitchen, lounge area, billiards room, fitness center, tennis and pickleball court, and a community pool. This coastal sanctuary offers the ultimate blend of luxury, tranquility and community, making it a rare find along Scenic Highway 30A.

Built in 2023

### **Essential Information**

MLS® #	953271
Price	\$3,995,000
Bedrooms	4
Bathrooms	6.00
Full Baths	4
Half Baths	2
Square Footage	3,366
Acres	0.17
Year Built	2023
Type	Detached Single Family
Sub-Type	Detached Single Family
Style	Beach House
Status	Active

### **Community Information**

Address 57 White Cliffs Crest  
Area 30A West  
Subdivision VILLAGE OF WHITE CLIFFS THE  
City SANTA ROSA BEACH  
County WALTON  
State FL  
Zip Code 32459

### **Amenities**

Amenities Beach, Community Room, Deed Access, Exercise Room, Game Room, Gated Community, Pavillion/Gazebo, Pickle Ball, Picnic Area, Pool, No Short Term Rental, Tennis, Waterfront  
Utilities Electric Available, Gas - Natural, Public Sewer Available, Public Water Available, TV Cable Available  
Parking Spaces 1  
Parking Garage, Garage: Attached, See Remarks  
# of Garages 1  
Water View GULF  
Has Pool Yes  
Pool Community

### **Interior**

Interior Features Breakfast Bar, Ceiling Crwn Molding, Elevator, Floor Hardwood, Floor Tile, Furnished - All, Kitchen Island, Lighting Recessed, Washer/Dryer Hookup, Window Treatment All  
Appliances Dishwasher, Dryer, Microwave, Range Hood, Refrigerator, Stove/Oven Gas, Washer, Wine Refrigerator  
Heating Heat: Central Electric  
Cooling A/C: Two Or More, A/C: Central Electric  
# of Stories 3

### **Exterior**

Exterior Concrete, Frame, Roof Metal, Siding CmntFbrHrdBrd  
Exterior Features Balcony, BBQ Pit/Grill, Fenced Lot-Part, Porch Covered, Porch Open, Rain Gutter  
Lot Description Covenants, Cul-De-Sac, Dead End, Restrictions, Survey Available, Within 1/2 Mile Of Water, See Remarks  
Roof Roof Metal  
Construction Frame

### **School Information**

Elementary	Dune Lakes
Middle	EMERALD COAST
High	SOUTH WALTON

### **Additional Information**

Zoning	Residential Single Family
HOA Fees	1250.00
HOA Fees Freq.	Quarterly

### **Listing Details**

Listing Office	Scenic Sotheby's International Realty
----------------	---------------------------------------

DISCLAIMER: Information Deemed Reliable but not guaranteed. The information being provided is for consumers' personal, non-commercial use and may not be used for any purpose other than to identify prospective properties consumers may be interested in purchasing. All listings are provided courtesy of the Emerald Coast Association of Realtors, Copyright 2024, All rights reserved. Vendors Member Number : 28325

Listing information last updated on July 1st, 2024 at 11:30am CDT