

\$1,995,000 - 79 Elm St, SANTA ROSA BEACH

MLS® #921898

\$1,995,000

5 Bedroom, 6.00 Bathroom, 2,800 sqft
Detached Single Family on 0.00 Acres

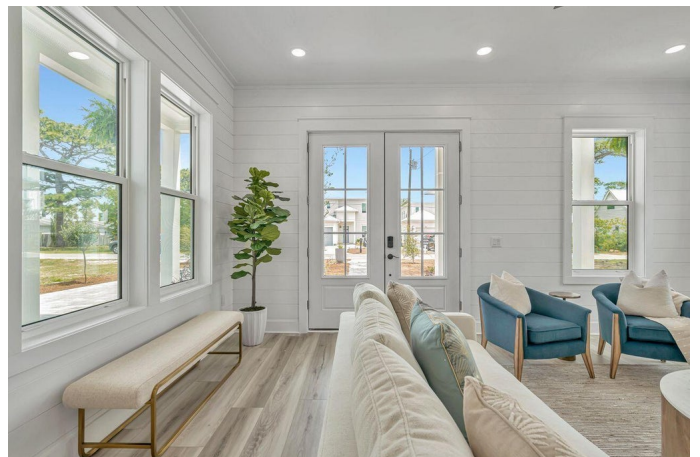
GULF SHORE MANOR, SANTA ROSA BEACH, FL

Price reduced! Beautiful new construction home, and stunning new coastal furniture, entirely furnished! This includes new washer and dryer as well. Beautiful bedding and bathroom linens included. Less than four blocks from the beach! Five bedrooms all come with a private bathroom and an extra one-half bath on the main level. Open floor plan living area and kitchen on the main floor with ten-foot ceilings. The living area opens to a covered porch to enjoy the outdoors. Primary suite on the main level for convenience. Also, a mud room with a door to the outside for beach traffic. Fully equipped kitchen with gas stove. Upstairs you will find four additional bedrooms plus an office/bunk room all with ten-foot ceilings. French doors lead to wrap wrap-around balcony to enjoy the gulf breezes. Oversized garage perfect for extra storage for paddle boards and water toys or even a golf cart. New, freshly landscaped that adds a special touch.

Built in 2023

Essential Information

MLS® #	921898
Price	\$1,995,000
Bedrooms	5
Bathrooms	6.00
Full Baths	5
Half Baths	1



Square Footage	2,800
Acres	0.00
Year Built	2023
Type	Detached Single Family
Sub-Type	Detached Single Family
Style	Florida Cottage
Status	Active

Community Information

Address	79 Elm St
Area	30A East
Subdivision	GULF SHORE MANOR
City	SANTA ROSA BEACH
County	WALTON
State	FL
Zip Code	32459

Amenities

Utilities	Gas - Natural, Public Sewer Available, Public Water Available
Parking Spaces	1
Parking	Garage
# of Garages	1
Pool	Community, Private

Interior

Interior Features	Breakfast Bar, Ceiling Raised, Washer/Dryer Hookup
Appliances	Auto Garage Door Opn, Dishwasher, Dryer, Microwave, Stove/Oven Gas, Washer
Heating	Heat Pump Air To Air
Cooling	Ceiling Fans
# of Stories	2

Exterior

Exterior	Roof Metal, Siding CmntFbrHrdBrd
Exterior Features	Balcony, Patio Covered, Porch Covered
Lot Description	Interior, Level
Roof	Roof Metal

School Information

Elementary	Dune Lakes
Middle	EMERALD COAST
High	SOUTH WALTON

Additional Information

Zoning	Residential Single Family
HOA Fees	0.00

Listing Details

Listing Office	Coldwell Banker Realty
----------------	------------------------

DISCLAIMER: Information Deemed Reliable but not guaranteed. The information being provided is for consumers' personal, non-commercial use and may not be used for any purpose other than to identify prospective properties consumers may be interested in purchasing. All listings are provided courtesy of the Emerald Coast Association of Realtors, Copyright 2024, All rights reserved. Vendors Member Number : 28325

Listing information last updated on July 29th, 2024 at 3:15am CDT