

\$2,199,000 - 81 S Cypress Breeze Blvd, SANTA ROSA BEACH

MLS® #950603

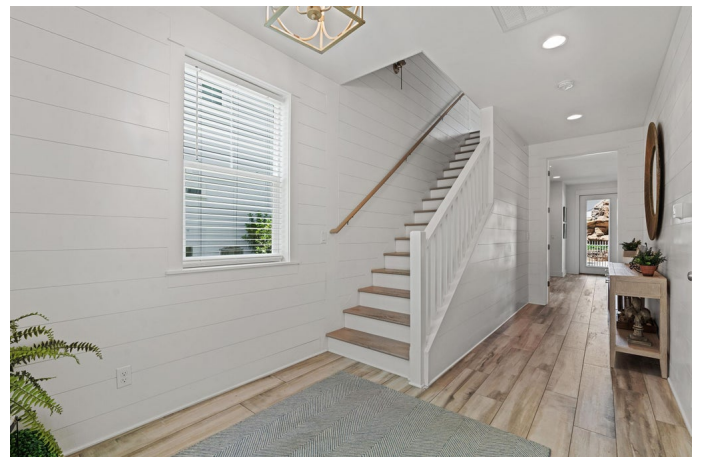
\$2,199,000

5 Bedroom, 5.00 Bathroom, 3,687 sqft
Detached Single Family on 0.12 Acres

CYPRESS BREEZE PLANTATION, SANTA ROSA BEACH, FL

Discover the beach lifestyle you've been dreaming of in the gated community of Cypress Breeze Plantation. This custom-built, 3700 sq. ft. beach house offers 5 bedrooms, 4.5 bathrooms, and a 2-car garage. The first floor features an expansive guest suite with a kitchenette and living space. Nestled on a prime pool lot, the home has a private gated entrance to the community pool, providing all the benefits of a pool without the maintenance. Fully turn-key, the property comes furnished with premium art, decor, linens, rugs, and lamps, meticulously curated for a luxurious aesthetic. The first floor includes a 2-car garage with a sauna and ample storage for beach toys. The spacious foyer leads to a lockout suite with a king bedroom and full bath, a large living area with a gas fireplace. Discover the beach lifestyle you've been dreaming of in the gated community of Cypress Breeze Plantation. This custom-built, 3700 sq. ft. beach house offers 5 bedrooms, 4.5 bathrooms, and a 2-car garage. The first floor features an expansive guest suite with a kitchenette and living space. Nestled on a prime pool lot, the home has a private gated entrance to the community pool, providing all the benefits of a pool without the maintenance. Fully turn-key, the property comes furnished with premium art, decor, linens, rugs, and lamps, meticulously curated for a luxurious aesthetic.

The first floor includes a 2-car garage with a



sauna and ample storage for beach toys. The spacious foyer leads to a lockout suite with a king bedroom and full bath, a large living area with a gas fireplace, a kitchenette, and access to an exterior entertaining porch with a grilling area, bar, TV, and lounge. The second floor features an open family, dining, and kitchen area with retractable glass doors opening to a large porch overlooking the pool. The kitchen boasts commercial-grade stainless appliances, a gas stove and oven, custom cabinetry, quartzite countertops, and breakfast bar. The primary suite on this floor includes an oversized walk-in closet and spa-like bathroom with a beautiful soaking tub and tiled walk-in shower.

The third floor contains three spacious bedrooms, a full laundry room, a hall bathroom with double sinks, and access to a large porch featuring custom-made bed swings for relaxing. Built with impact-rated walls, windows, and doors, and equipped with three HVAC systems, this home is as durable as it is beautiful. Located just under a mile from Ed Walline Beach Access at Gulf Place, you can easily walk, bike, or use a golf cart to reach the beach. The home is also minutes from the shops and restaurants of Gulf Place and Shunk Gulley, offering the best of 30A West living. Cypress Breeze Plantation is a vibrant community where neighbors become friends. Enjoy annual events and a lively atmosphere with residents walking, biking, rollerblading, and kids playing. This is the perfect place to embrace the idyllic beach life.

Built in 2019

Essential Information

MLS® #	950603
Price	\$2,199,000
Bedrooms	5

Bathrooms	5.00
Full Baths	4
Half Baths	1
Square Footage	3,687
Acres	0.12
Year Built	2019
Type	Detached Single Family
Sub-Type	Detached Single Family
Style	Beach House
Status	Active

Community Information

Address	81 S Cypress Breeze Blvd
Area	30A West
Subdivision	CYPRESS BREEZE PLANTATION
City	SANTA ROSA BEACH
County	WALTON
State	FL
Zip Code	32459

Amenities

Amenities	Gated Community, Pets Allowed, Pool
Utilities	Public Sewer Available, Public Water Available
Parking Spaces	2
Parking	Garage, Oversized
# of Garages	2
Has Pool	Yes
Pool	Community

Interior

Interior Features	Fireplace Gas, Floor Tile, Furnished - All
Appliances	Auto Garage Door Opn, Dishwasher, Dryer, Microwave, Range Hood, Refrigerator, Stove/Oven Gas, Washer
Heating	Heat: Central Electric
Cooling	A/C: Central Electric
Fireplace	Yes
Fireplaces	Fireplace Gas
# of Stories	3

Exterior

Exterior	Roof Metal, Siding CmntFbrHrdBrd, Foundation Slab On Grade
Lot Description	Restrictions
Roof	Roof Metal
Foundation	Foundation Slab On Grade

School Information

Elementary	Dune Lakes
Middle	EMERALD COAST
High	SOUTH WALTON

Additional Information

Zoning	Residential Single Family
HOA Fees	660.00
HOA Fees Freq.	Quarterly

Listing Details

Listing Office	Compass
----------------	---------

DISCLAIMER: Information Deemed Reliable but not guaranteed. The information being provided is for consumers' personal, non-commercial use and may not be used for any purpose other than to identify prospective properties consumers may be interested in purchasing. All listings are provided courtesy of the Emerald Coast Association of Realtors, Copyright 2024, All rights reserved. Vendors Member Number : 28325
Listing information last updated on August 15th, 2024 at 7:15pm CDT