

\$6,996,340 - 90 Whitten Way, INLET BEACH

MLS® #954851

\$6,996,340

4 Bedroom, 5.00 Bathroom, 3,421 sqft
Detached Single Family on 0.14 Acres

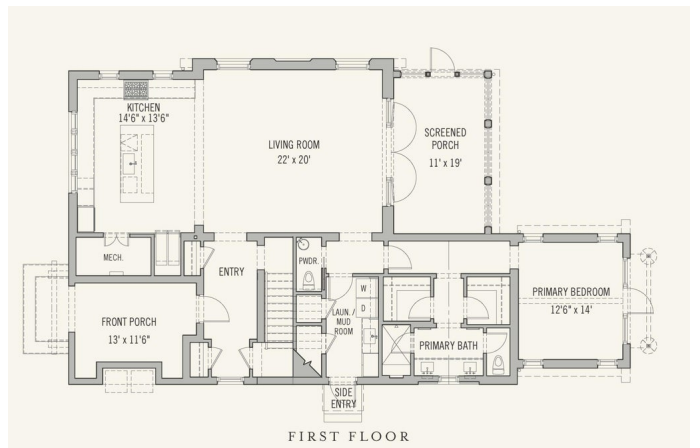
ALYS BEACH, INLET BEACH, FL

This Somerset Home in the GG Block, features streetscapes characterized by white garden walls that open onto a rugged natural landscape. A neighborhood that is bit more "Country" than "Town." Much emphasis was placed on outdoor living with an open arrangement of interior spaces extending outdoors with garden rooms and courtyards shaded by trellises and arbors. Outdoor gathering places with firepit alcoves, water features, thoughtfully placed pools, covered summer kitchens and bars, and screened garden rooms are designed to maximize each property's use and enjoyment. This Homesite fronts the 20-acre Nature Preserve, in close proximity to the The Silva amenity to be delivered in the GG Block. The Silva will be comprised of a central event lawn, an enclosed pavilion opening onto the lawn, pool, and covered terrace with bar and café.

Built in 2024

Essential Information

MLS® #	954851
Price	\$6,996,340
Bedrooms	4
Bathrooms	5.00
Full Baths	4
Half Baths	1
Square Footage	3,421
Acres	0.14



Year Built	2024
Type	Detached Single Family
Sub-Type	Detached Single Family
Style	Other
Status	Active

Community Information

Address	90 Whitten Way
Area	30A East
Subdivision	ALYS BEACH
City	INLET BEACH
County	WALTON
State	FL
Zip Code	32461

Amenities

Amenities	BBQ Pit/Grill, Beach, Deed Access, Exercise Room, Pickle Ball, Playground, Pool, Tennis, TV Cable Available, Waterfront, Elevators, Sauna/Steam Room, Whirlpool
Utilities	Electric Available, Gas - Natural, Public Sewer Available, Public Water Available, TV Cable Available, Underground
Parking Spaces	2
Parking	Garage: Detached
# of Garages	2
Has Pool	Yes
Pool	Pool - In-Ground, Private, Pool - Gunite Concrct, Community

Interior

Interior Features	Furnished - None
Appliances	Auto Garage Door Opn, Dishwasher, Disposal, Dryer, Microwave, Oven:Self Cleaning, Refrigerator W/Ice Maker, Smoke Detector, Stove/Oven Gas, Washer
Heating	Heat High Efficiency
Cooling	A/C: High Efficiency
# of Stories	2

Exterior

Exterior	Siding Stucco, Block, Concrete, Roof Concrete
Exterior Features	Guest Quarters, Pool - In-Ground, Porch Screened, Pool - Gunite Concrct
Lot Description	Within 1/2 Mile Of Water, Cul-De-Sac

Windows	Storm Windows
Roof	Block, Roof Concrete

School Information

Elementary	Dune Lakes
Middle	EMERALD COAST
High	SOUTH WALTON

Additional Information

Zoning	Residential Single Family
HOA Fees	2693.88
HOA Fees Freq.	Quarterly

Listing Details

Listing Office	Alys Beach Properties Llc
----------------	---------------------------

DISCLAIMER: Information Deemed Reliable but not guaranteed. The information being provided is for consumers' personal, non-commercial use and may not be used for any purpose other than to identify prospective properties consumers may be interested in purchasing. All listings are provided courtesy of the Emerald Coast Association of Realtors, Copyright 2024, All rights reserved. Vendors Member Number : 28325
Listing information last updated on July 17th, 2024 at 6:30pm CDT