

\$349,000 - 9860 S Thomas Dr Unit 514, PANAMA CITY BEACH

MLS® #953284

\$349,000

1 Bedroom, 2.00 Bathroom, 1,047 sqft
Condominiums on 0.00 Acres

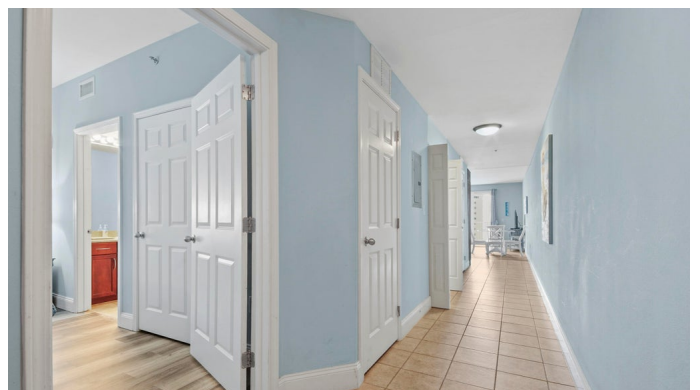
Laketown Wharf Phase II, PANAMA CITY BEACH, FL

Step into the elegance of LAKETOWN WHARF 514, where a stunningly Gulf-view condo awaits. With a spacious 1,047 square feet of indoor luxury, this exquisite condo offers a generously sized kitchen and living area, complemented by a grand balcony that offers captivating views of the Gulf. The bedroom exudes sophistication, providing ample space, an ensuite bathroom, and a large closet. The additional bunk room boasts easy access to a second bathroom. Located in the heart of Panama City Beach, Laketown Wharf Resort offers a premier beachfront living experience with an array of amenities. Enjoy five pools, two hot tubs, a fully equipped gym, exclusive beach access, covered parking, a nightly light show, five restaurants, market shops, and a poolside bar. For accurate measurements, verif

Built in 2008

Essential Information

MLS® #	953284
Price	\$349,000
Bedrooms	1
Bathrooms	2.00
Full Baths	2
Square Footage	1,047
Acres	0.00
Year Built	2008



Type	Condominiums
Sub-Type	Condominiums
Style	N/A
Status	Active

Community Information

Address	9860 S Thomas Dr Unit 514
Area	Bay County
Subdivision	Laketown Wharf Phase II
City	PANAMA CITY BEACH
County	BAY
State	FL
Zip Code	32408

Amenities

Amenities	BBQ Pit/Grill, Dumpster, Pavillion/Gazebo, Pets Allowed, Pickle Ball, Pool, Short Term Rental - Allowed, TV Cable Available, Exercise Room, Game Room
Utilities	Electric Available, Public Sewer Available, Public Water Available, TV Cable Available, Community Water, Phone Available
Parking	Garage
Water View	GULF
Has Pool	Yes
Pool	Community

Interior

Interior Features	Furnished - All, Owner's Closet, Hallway Bunk Beds, Kitchen Island, Renovated
Appliances	Dishwasher, Disposal, Dryer, Microwave, Refrigerator W/Ice Maker, Smoke Detector, Stove/Oven Electric, Washer
Heating	Heat: Central Electric
Cooling	A/C: Central Electric, Ceiling Fans

Exterior

Exterior Features	Balcony
-------------------	---------

School Information

Elementary	BREAKFAST POINT
Middle	BREAKFAST POINT
High	ARNOLD

Additional Information

HOA Fees 2307.00
HOA Fees Freq. Quarterly

Listing Details

Listing Office Saltwater Real Estate of PCB

DISCLAIMER: Information Deemed Reliable but not guaranteed. The information being provided is for consumers' personal, non-commercial use and may not be used for any purpose other than to identify prospective properties consumers may be interested in purchasing. All listings are provided courtesy of the Emerald Coast Association of Realtors, Copyright 2024, All rights reserved. Vendors Member Number : 28325
Listing information last updated on July 5th, 2024 at 9:45pm CDT