

# \$350,000 - 9900 S Thomas Dr Unit 2009, PANAMA CITY BEACH

MLS® #944732

## \$350,000

1 Bedroom, 2.00 Bathroom, 863 sqft  
Condominiums on 0.00 Acres

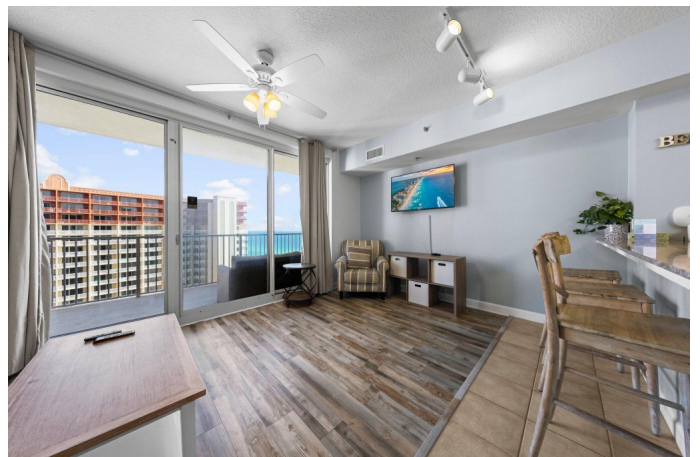
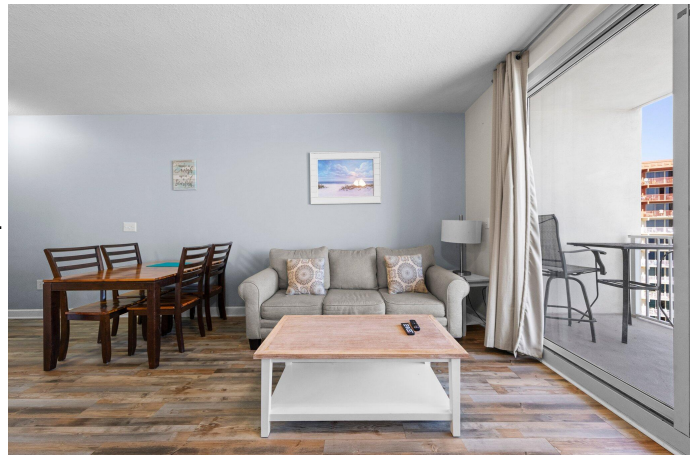
SHORES OF PANAMA, PANAMA CITY BEACH, FL

Discover the unparalleled investment potential of this beautifully decorated 1BR+Bunk, 2BA condo at the Shores of Panama, offering stunning views and prime location in Panama City Beach. With comfortable accommodation for 6, fully furnished and rental ready, this unit promises both relaxation and lucrative rental income opportunities. Enjoy panoramic Gulf views from your balcony and take advantage of the resort's premier amenities including a lagoon-style pool, heated indoor pool, fitness center, and more. Situated within close distance to restaurants and entertainment venues, this condo epitomizes the ultimate beach lifestyle. Verify all information deemed reliable before seizing this exceptional opportunity to own a slice of paradise at the Shores of Panama.

Built in 2007

## Essential Information

MLS® #	944732
Price	\$350,000
Bedrooms	1
Bathrooms	2.00
Full Baths	2
Square Footage	863
Acres	0.00
Year Built	2007
Type	Condominiums



Sub-Type	Condominiums
Style	N/A
Status	Active

### **Community Information**

Address	9900 S Thomas Dr Unit 2009
Area	Bay County
Subdivision	SHORES OF PANAMA
City	PANAMA CITY BEACH
County	BAY
State	FL
Zip Code	32408

### **Amenities**

Utilities	Electric Available, Phone Available, Community Sewer, Community Water
Parking	Garage, Garage: Attached, Garage: Detached
Is Waterfront	Yes
Waterfront	GULF
Water View	GULF
Has Pool	Yes
Pool	Community, Pool - In-Ground, Private

### **Interior**

Interior Features	Breakfast Bar, Furnished - All, Kitchen Island, Pantry, Floor Tile, Hallway Bunk Beds, Window Treatment All
Appliances	Dishwasher, Dryer, Microwave, Refrigerator, Refrigerator W/Ice Maker, Stove/Oven Electric, Washer
Heating	Heat: Central Electric
Cooling	A/C: Central Electric, Ceiling Fans

### **Exterior**

Exterior	Concrete
Exterior Features	Balcony, Pool - In-Ground

### **School Information**

Elementary	BREAKFAST POINT
Middle	BREAKFAST POINT
High	ARNOLD

## **Additional Information**

HOA Fees            2848.00  
HOA Fees Freq.    Quarterly

## **Listing Details**

Listing Office        Berkshire Hathaway HomeServices PenFed Realty

DISCLAIMER: Information Deemed Reliable but not guaranteed. The information being provided is for consumers' personal, non-commercial use and may not be used for any purpose other than to identify prospective properties consumers may be interested in purchasing. All listings are provided courtesy of the Emerald Coast Association of Realtors, Copyright 2024, All rights reserved. Vendors Member Number : 28325  
Listing information last updated on July 16th, 2024 at 1:15am CDT