

\$1,450,000 - Ee5 Mose Alley, INLET BEACH

MLS® #953293

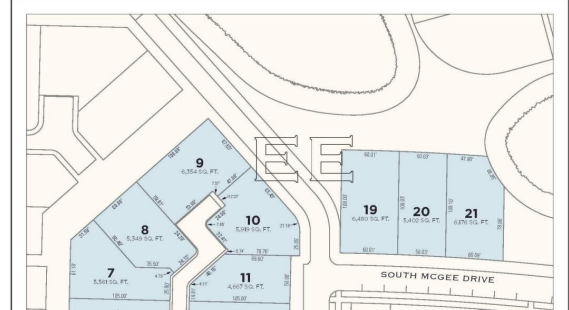
\$1,450,000

Bedroom, Bathroom, 3,920 sqft
Residential Land on 0.09 Acres

ALYS BEACH, INLET BEACH, FL

Corner homesite located N of 30A and situated on a path that leads towards the Bela Gray Green and beach access.

ALYS
BEACH
BLOCK EE



Essential Information

MLS® #	953293
Price	\$1,450,000
Square Footage	3,920
Acres	0.09
Type	Residential Land
Sub-Type	Residential Land
Status	Active



Community Information

Address	Ee5 Mose Alley
Area	30A East
Subdivision	ALYS BEACH
City	INLET BEACH
County	WALTON
State	FL
Zip Code	32461



Amenities

Amenities	BBQ Pit/Grill, Beach, Deed Access, Elevators, Exercise Room, Playground, Pool, Sauna/Steam Room, TV Cable Available, Tennis, Waterfront, Pickle Ball
Utilities	Public Sewer Available, Public Water Available, Electric Available, Gas - Natural, TV Cable Available, Underground
Features	Within 1/2 Mile Of Water, Corner

Exterior

Lot Description Within 1/2 Mile Of Water, Corner

School Information

Elementary Dune Lakes
Middle EMERALD COAST
High SOUTH WALTON

Additional Information

Zoning Residential Single Family
HOA Fees 2693.88
HOA Fees Freq. Quarterly

Listing Details

Listing Office Alys Beach Properties Llc

DISCLAIMER: Information Deemed Reliable but not guaranteed. The information being provided is for consumers' personal, non-commercial use and may not be used for any purpose other than to identify prospective properties consumers may be interested in purchasing. All listings are provided courtesy of the Emerald Coast Association of Realtors, Copyright 2024, All rights reserved. Vendors Member Number : 28325
Listing information last updated on August 18th, 2024 at 5:00am CDT