

\$1,200,000 - Hwy 30a, SANTA ROSA BEACH

MLS® #924180

\$1,200,000

Bedroom, Bathroom, 6,098 sqft
Residential Land on 0.14 Acres

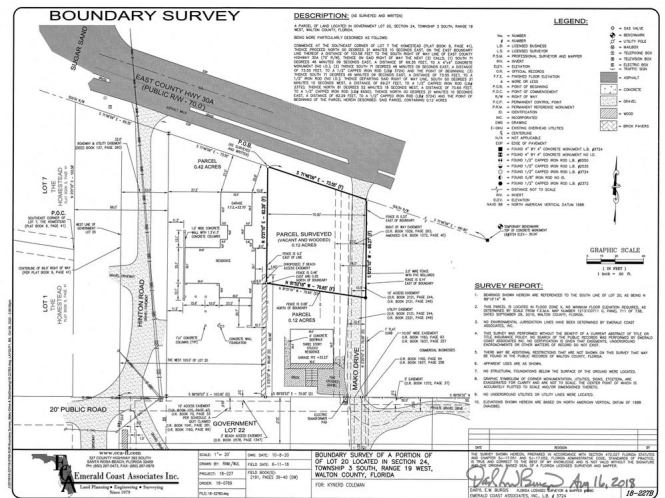
Seagrove Beach, SANTA ROSA BEACH, FL

Property south of 30A in Seagrove Beach area. Walking distance to restaurants and shopping. Have your dream house on this lot with its shared private deeded beach access. One of a kind right on 30A.



Essential Information

MLS® #	924180
Price	\$1,200,000
Square Footage	6,098
Acres	0.14
Type	Residential Land
Sub-Type	Residential Land
Status	Active



Community Information

Address	Hwy 30a
Area	30A East
Subdivision	Seagrove Beach
City	SANTA ROSA BEACH
County	WALTON
State	FL
Zip Code	32459

Amenities

Utilities	Community Water, Electric Available, Sewer Available, Tap Fee Due, Gas Available
Features	Corner, Survey Available, Within 1/2 Mile Of Water

Exterior

Lot Description Corner, Survey Available, Within 1/2 Mile Of Water

School Information

Elementary Dune Lakes
Middle EMERALD COAST
High SOUTH WALTON

Additional Information

Zoning Residential Single Family
HOA Fees 0.00

Listing Details

Listing Office Corcoran Reverie SRB

DISCLAIMER: Information Deemed Reliable but not guaranteed. The information being provided is for consumers' personal, non-commercial use and may not be used for any purpose other than to identify prospective properties consumers may be interested in purchasing. All listings are provided courtesy of the Emerald Coast Association of Realtors, Copyright2024, All rights reserved. Vendors Member Number : 28325
Listing information last updated on August 18th, 2024 at 3:15am CDT