

\$13,260,000 - Tbd-b Woodbine Rd, Pace

MLS® #931232

\$13,260,000

Bedroom, Bathroom, 577,606 sqft
Residential Land on 13.26 Acres

WOODBINE SPRINGS PLANTATION, Pace, FL

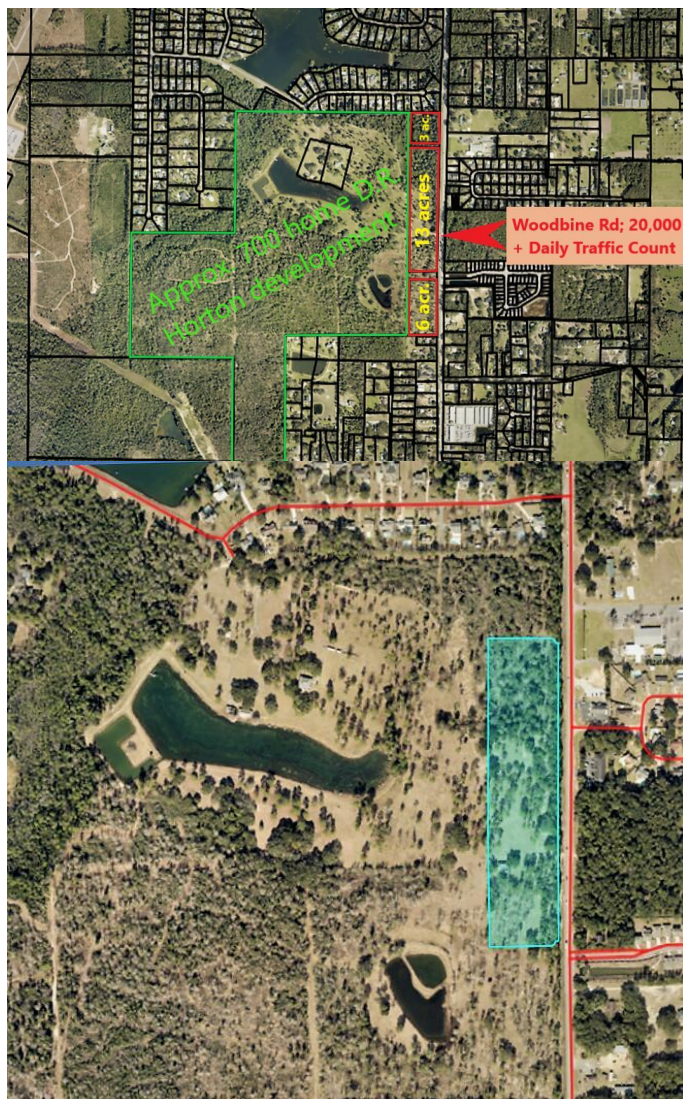
13.26 acres, level, ready for commercial development. This property adjoins the several hundred homes new development going in west of Woodbine Rd. Zoned Highway Commercial Development, this property would be excellent for a mini-storage operation, convenience store, offices, retail, etc. The owner is not currently exploring development options for this property, so it is a blank slate, waiting for the right developer! Daily traffic count is just under 20,000; with road construction taking place over the past 2 years.

Essential Information

MLS® #	931232
Price	\$13,260,000
Square Footage	577,606
Acres	13.26
Type	Residential Land
Sub-Type	Residential Land
Status	Active

Community Information

Address	Tbd-b Woodbine Rd
Area	North Santa Rosa County
Subdivision	WOODBINE SPRINGS PLANTATION
City	Pace
County	SANTA ROSA
State	FL



Zip Code 32571

Amenities

Utilities Electric Available, Gas - Natural, Public Sewer Available, Public Water Available

Features Corner, Level

Exterior

Lot Description Corner, Level

School Information

Elementary S S Dixon

Middle Sims

High Pace

Additional Information

Zoning Commercial

HOA Fees 0.00

Listing Details

Listing Office HCB Realty Advisors LLC

DISCLAIMER: Information Deemed Reliable but not guaranteed. The information being provided is for consumers' personal, non-commercial use and may not be used for any purpose other than to identify prospective properties consumers may be interested in purchasing. All listings are provided courtesy of the Emerald Coast Association of Realtors, Copyright 2024, All rights reserved. Vendors Member Number : 28325

Listing information last updated on August 14th, 2024 at 8:00am CDT